



---

# SOFFA

— design | food | people | travel | life —

M

MINI VOLUME | 14

## 1113 METRES ABOVE THE ORDINARY

text: Adéla Kudrnová | styling: SOFFA | photo: Adéla Kudrnová

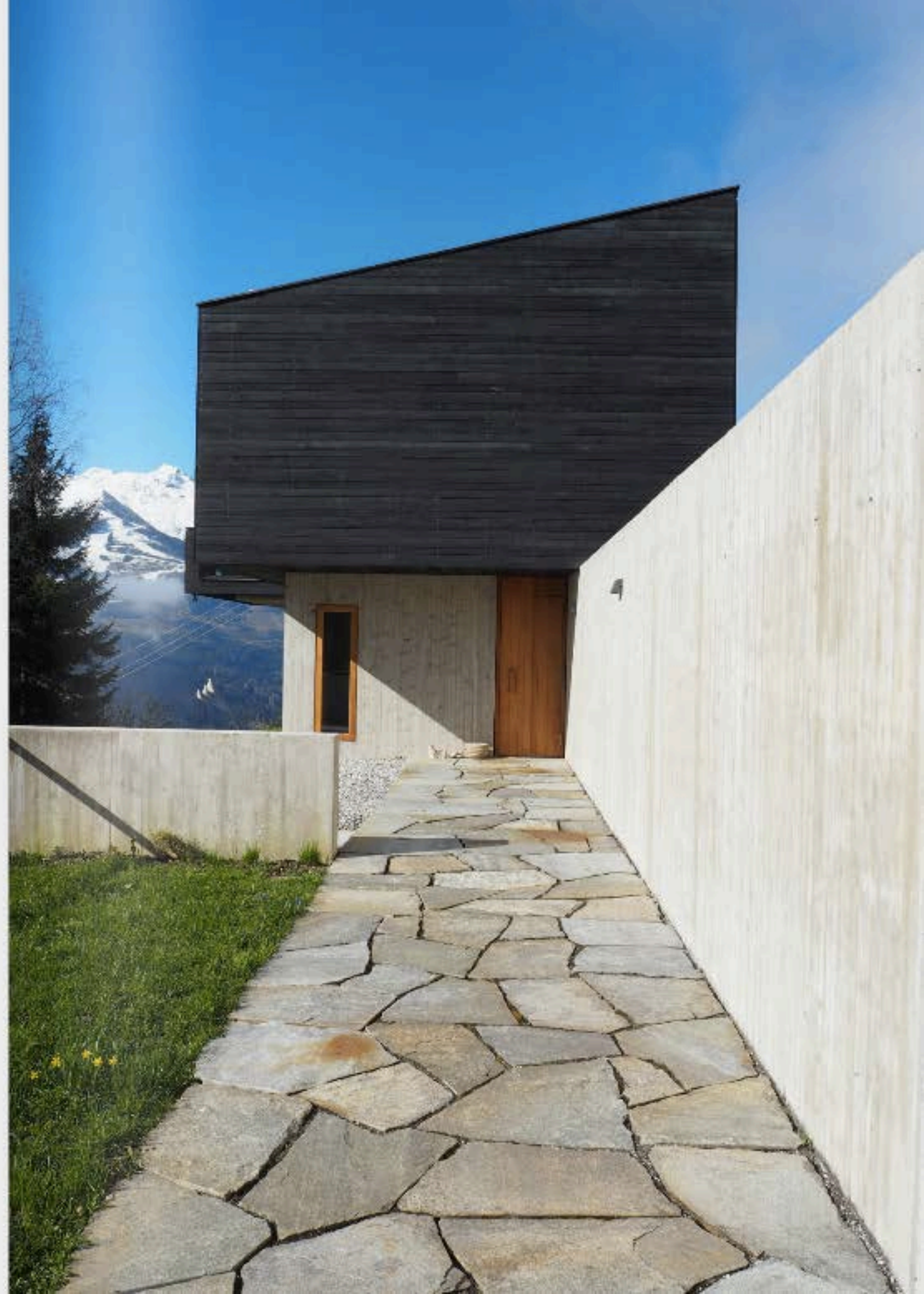
IF YOU ARE LOOKING FOR A PEACEFUL AND CONTEMPLATIVE PLACE FOR THIS YEAR'S LONG-AWAITED HOLIDAY, WE RECOMMEND THE MOUNTAIN HOUSES AUFBERG IN THE AUSTRIAN AREA OF ZELL AM SEE – KAPRUN. THESE ARCHITECTURAL GEMS ARE AT ONCE ULTRA MODERN YET VERY FRIENDLY AND WELCOMING.

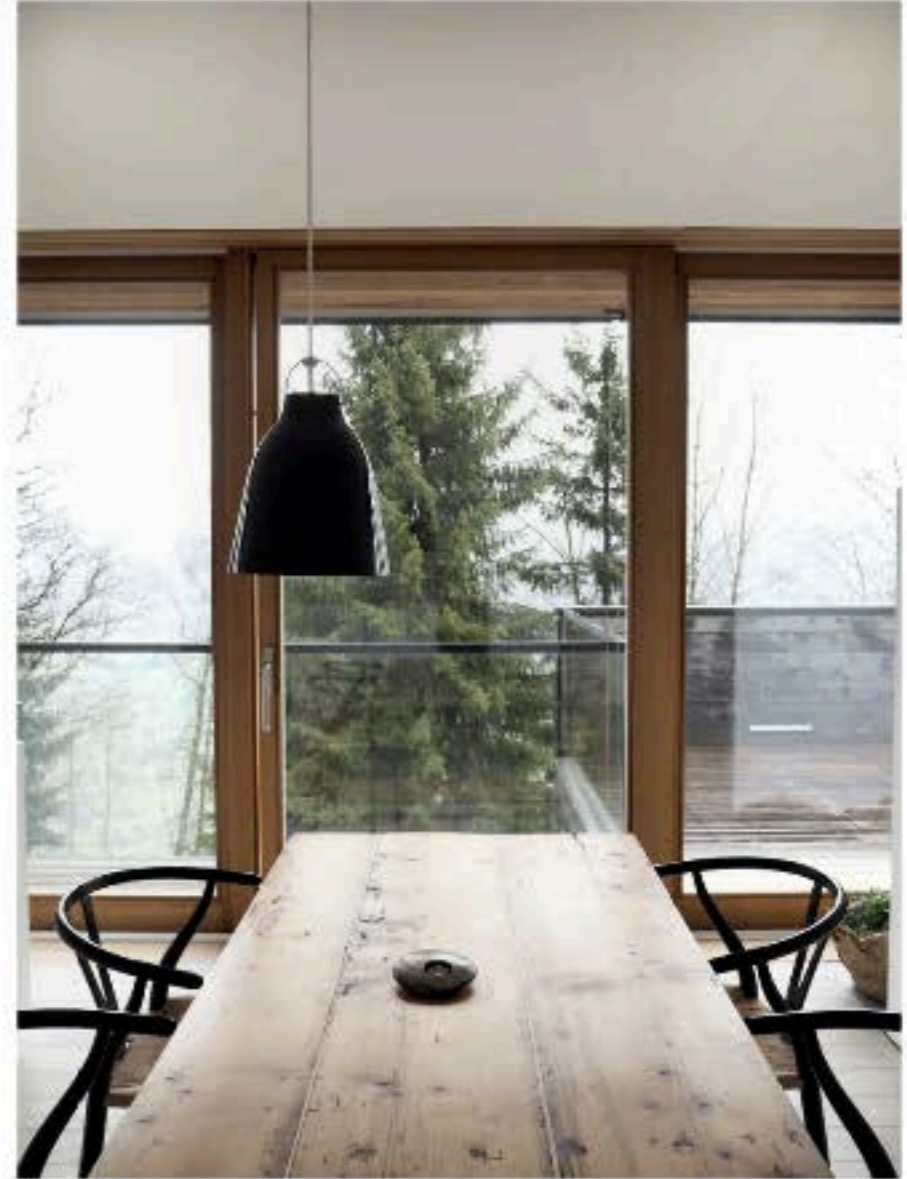
Near the small Austrian town of Piesendorf in the Hohe Tauern National Park stand the mountain houses Aufberg. Their names Aufberg 1113 and Aufberg 1110 refer to the altitude at which they stand, an idyllic spot that seems to have been created for contemplation and relaxation. The homes were designed by the Munich-based architect Andreas Meck ([www.meck-architekten.de](http://www.meck-architekten.de)) and have won a number of architectural prizes. In his design Meck skilfully responded to the owners' request to create an idyllic spot from which to enjoy the splendid mountain views.

The two apartments found in Aufberg 1113 were inspired by the surrounding mountaintops and by the concept of a bird's nest. Located on separate levels of the stunning home, the apartments are named Swallow's Nest and Sparrow's Nest. The larger of the two apartments accommodates two to four visitors and the smaller two to three. Availability for this year's season can be found at [www.aufberg.at](http://www.aufberg.at)

Aufberg's clean lines and open spaces invite you to pause and admire for hours on end the beautiful design, natural materials and breathtaking views. The primary aesthetic is one of natural material – wood, stone, wool and felt – a perfect complement to the pristine surrounds. The glass walls of each apartment allow the natural surroundings to be brought into the interior, as if you could simply reach out and touch the green tree tops and the mountains beyond. ■

For more information go to: [www.aufberg.at](http://www.aufberg.at)





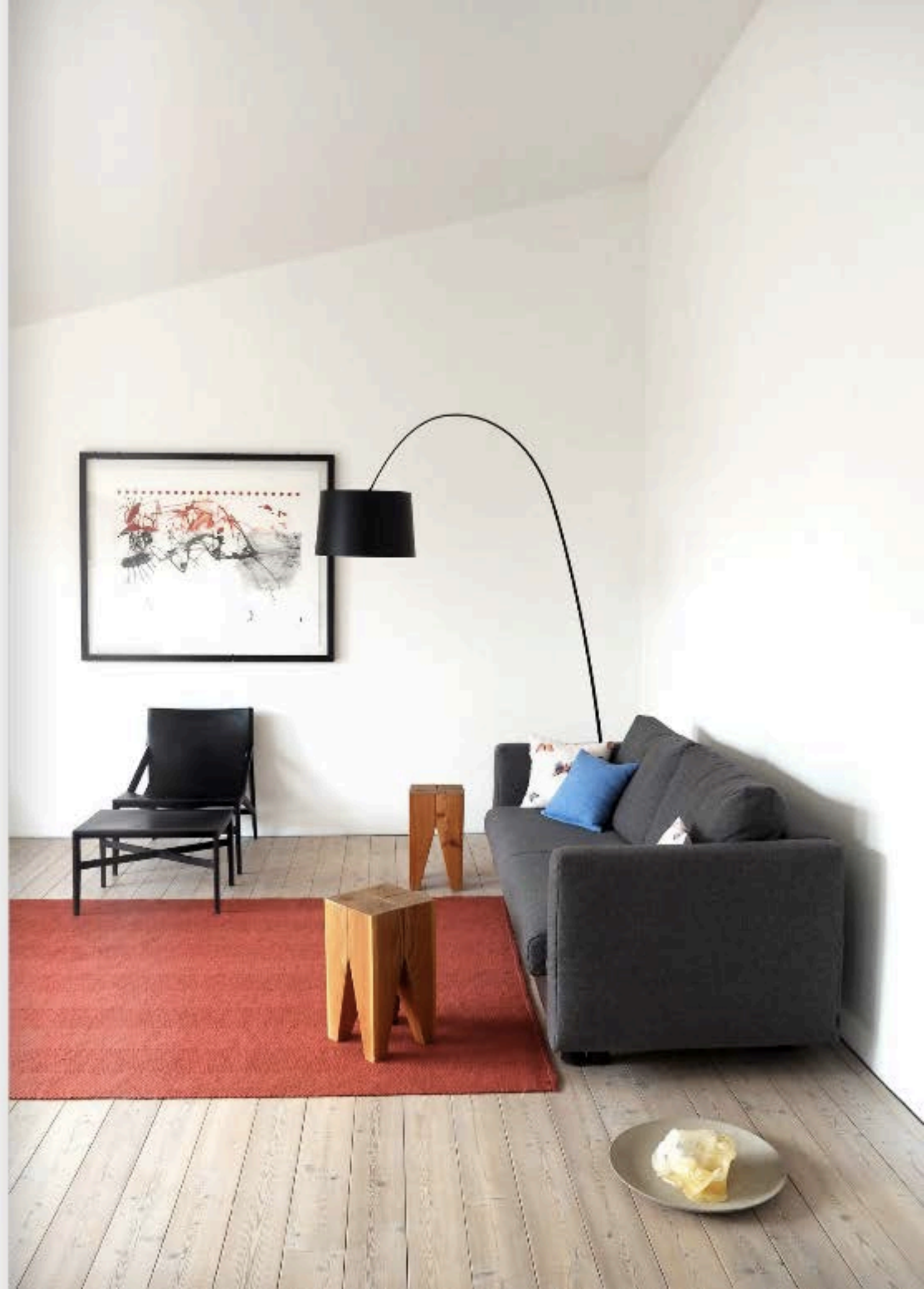
**APARTMENT SCHWALBENNEST  
(SWALLOW'S NEST):**

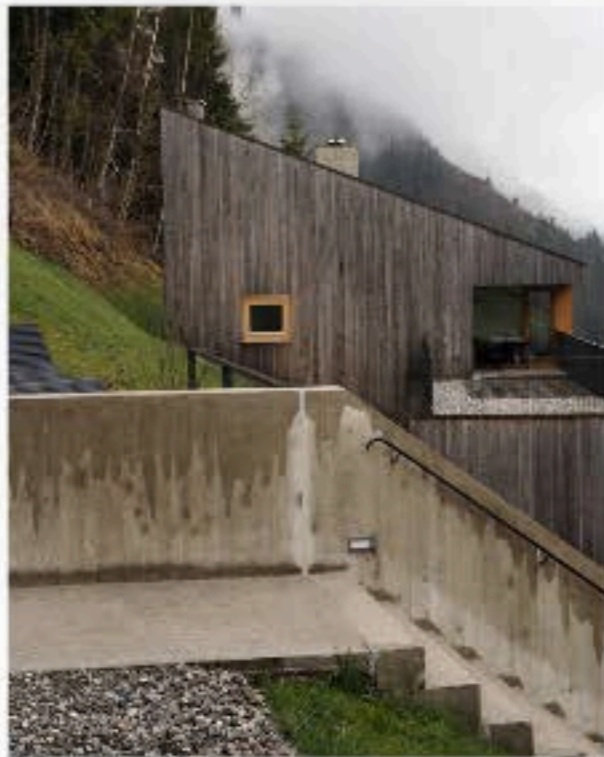
The upper story of Aufberg 1113 houses the 73 m<sup>2</sup> Swallow's Nest apartment, which is formed by one large open space. The entire southern wall is made of glass, providing a breathtaking view of the panorama of the Hohe Tauern mountains.



#### OPEN SPACE:

Behind the open plan kitchen is the bedroom. The private space can be closed off from the main part of the apartment by clever moving doors hidden inside the wall that holds the kitchen cabinets. Between the dining and living rooms is a beautiful fireplace – the locus of the entire living space.





**A TERRACE AS A BIRD'S NEST:**

The entire southern glass wall is lined with a covered terrace that extends on one end as an aerial balcony. Whether you enjoy this space at sunrise or sunset, you are certain to be fascinated by the perfect interplay of mountains, sun and nature. This is true freedom!





**BEDROOM:**

There is nothing better than waking to the sight of snowcapped mountains. Or perhaps there is something better - looking at the mountains from the soothing comfort of a hot bath. Perfect relaxation!

## AUFBERG 1110

text: Adéla Kudrnová | styling: SOFFA | photo: Adéla Kudrnová

THE SECOND HOUSE ON A HILL OVERLOOKING THE KAPRUN VALLEY – AUFBERG 1110 – ALSO HIDES TWO APARTMENTS: FRESITZ AND ANSITZ. IN COMPARISON TO THE APARTMENTS IN AUFBERG 1113, THESE APARTMENTS WERE BUILT USING WOOD AND FOLLOWING MORE CLOSELY LOCAL ARCHITECTURAL TRADITIONS. COLOURS ARE THE FOCUS OF DESIGN IN THESE TWO HOLIDAY APARTMENTS.

At first glance a rather simple home in terms of shape and decor, Aufberg 1110 is also the creation of the Munich-based architect Andreas Meck ([www.meck-architekten.de](http://www.meck-architekten.de)). This home is built entirely from wood, which makes it a very efficient and pleasing structure built fully in the spirit of sustainable design.

Larch is ever-present, not only on the outside facade, where it will naturally age, but also in the interior. The walls in the various rooms, in the hall and along the fireplace are all covered in wood. The natural shades of wood are contrasted with fun details full of colour, including vibrant chairs, a striking armchair and legendary La Volière lamps.

The key design element in this home is the division of spaces with the help of different ceiling levels, galleries and inventive staircases. As with Aufberg 1113, the large windows frame views of the surrounding mountain scenery and function as natural paintings. Whether you sit yourself in one of the comfortable chairs inside the house or on the terrace, you won't want to leave. We know from our own experience! ■

Availability for this year's season can be checked at [www.aufberg.at](http://www.aufberg.at)







**THE EXTERIOR OF AUFBERG 1110:**

The smaller of the two Aufberg homes, 1110 appears to naturally emerge from the hillside, as the angle of the roof follows the angle of the terrain. The simplicity of this home is underscored by the choice of an all-wood facade made of larch, which will age gradually and naturally, never losing its beauty and charm.





**LIVELY DETAILS:**

The interiors of apartments Anstz and Frelsitz are dedicated to colour. The chairs, inspired by Austrian traditional design, shine in bright orange and other vibrant colours. The dining tables are brought to life with unique hanging lights La Volière, designed and manufactured by the French designer Mathieu Challières.